

Please follow the steps below and make the necessary repairs for any leaks detected.

Step 1. Ensure that all faucets and other water devices are shut off.



Step 2. Find your water meter box in front of your home near the roadside edge.




Some Water Meters are not in a meter box and may look like this.



Step 3. Open the Water Meter Box and locate the Meter and the Main Water Shut-Off Valve inside the Meter Box.





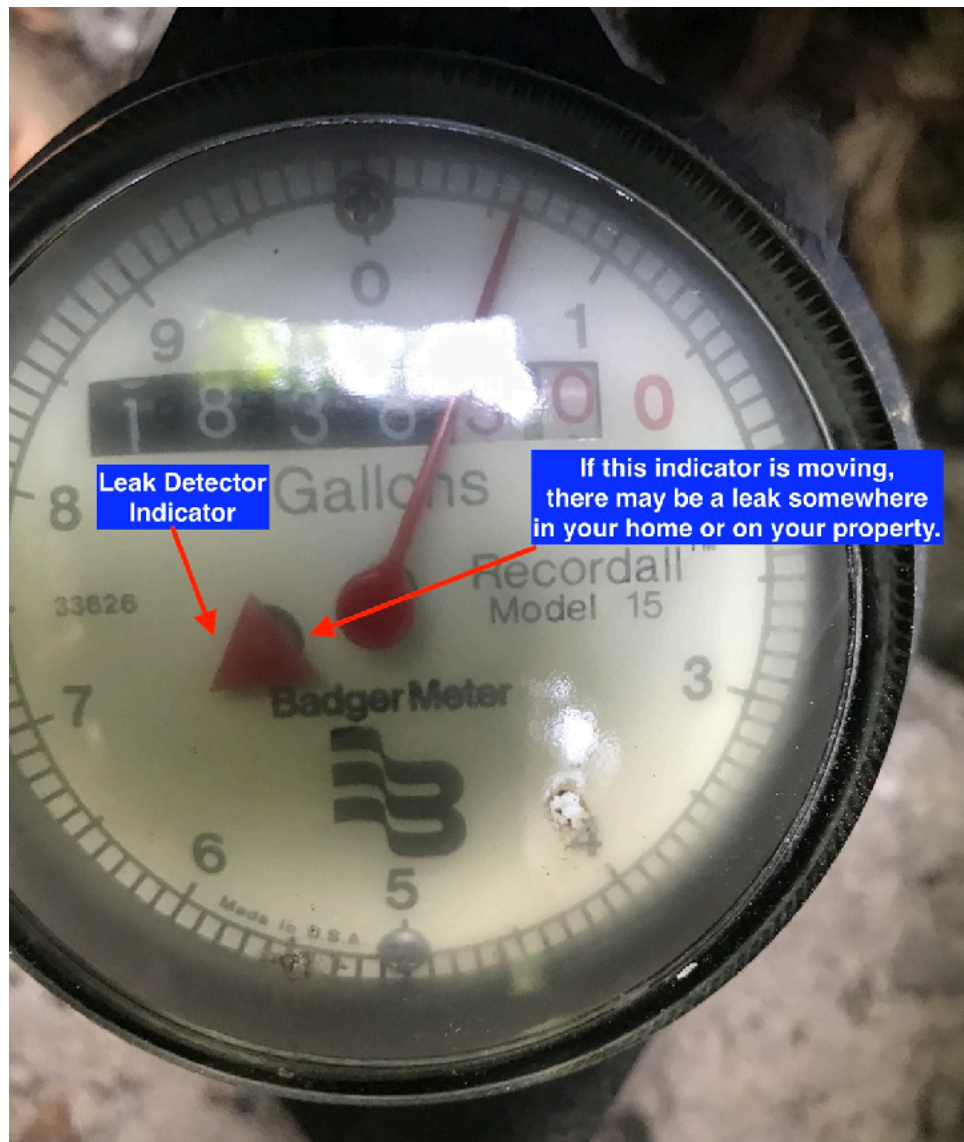
Sample Water Meter and Water Shut-Off Valve
Yours may look slightly different

Water Shut-Off Valve
in the Closed Position
The Valve is Open when the valve
is inline
with the pipe.



Shut-Off Valve Only
No Meter

Step 4. Check to see if the system leak detection indicator is moving. If the indicator is moving, there is a leak. Check for leaks in your home or on your property.



Leak Detector Indicator

If this indicator is moving, there may be a leak somewhere in your home or on your property.



Your Leak Detector Indicator
May Look Like This One

Step 5. Repair or replace any leaking water devices in and around your home.



Please note:

If you can't find your Water Meter Box OR there is no Water Meter and just a Shut-Off Valve, please notify the Board of Directors via the "Contact" link below.

Water meters are used only for in-home leak detection purposes. Check yours regularly.

<http://www.chemeketapark.org/contact/>.